



Save Time and Reduce Costs for Maintenance and Service

Reduce the hassle of unexpected problems and inefficient service calls

Panasonic's ET-SWA100 Early Warning Software monitors projectors and displays connected to an intranet and informs you when an abnormality is detected or predicted*, and when there are symptoms of trouble. This minimizes downtime to provide more stable operation.

* Please note that this software does not guarantee the prediction of all device breakdowns in all instances.

Early Warning Notification Helps Prevent or Minimize Downtime

- **Advance notice of required maintenance**

Knowing beforehand the approximate time that consumables and maintenance parts will need to be replaced and serviced makes it easier to plan for maintenance.

- **Problem prediction detection**

Taking care of problems in advance resolves them before they cause trouble.

- **Quick response when problems occur**

When a problem occurs, data will tell you what the problem is, greatly reducing the time needed to restore the projector or display, and lowering downtime and costs.



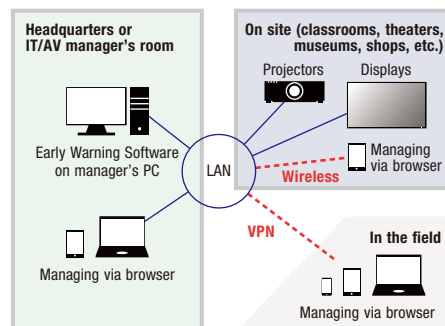
Manage Each Display Device from a Browser on Your Own Device

- **PC/tablet web browser monitoring**

You can check the projector or display status from your PC or tablet without having to physically go to the monitoring server.

- **Remote monitoring from your device via VPN**

When a VPN (Virtual Private Network) is configured, monitoring is possible from outside the intranet, which allows you to easily check the projector or display status from a remote location, greatly speeding up troubleshooting.



- **Remote projector/display control**

You can also link from the Early Warning Software monitoring screen to a web browser control screen to monitor and control each projector or display remotely.

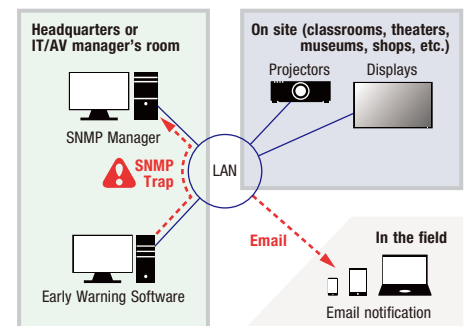
SNMP Trap Notification by Your Existing Monitoring System

- **Email notification through an SMTP server**

When a failure is detected or predicted, an e-mail notification is automatically sent to a predetermined e-mail address using SMTP protocol.

- **SNMP trap notification**

If an error occurs, an SNMP trap is sent to an SNMP manager application. This means that the early warning notification system can be smoothly integrated to an existing management system.



Detailed Monitoring

The ET-SWA100 monitor screen displays items such as the projector or display status* and maintenance schedule* in a gauge format. This makes it easy to understand at a glance. Projectors and displays can also be shown by group in a list format, to simplify the monitoring and management of multiple units.

Status Monitoring*



Temperature, lamp usage hours, and fan voltage meters

Maintenance Scheduling Suggestion*



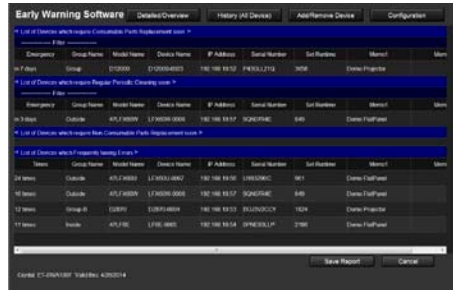
Lamp/filter/non-consumable parts replacement and filter cleaning

Warning



Error messages and future failure warnings

Reporting



Information on parts that are likely to be needed, such as replacement and service parts, can be extracted in report form.

Outline of System Requirements

Software Operating Environment

Operating system: Microsoft Windows® 7/8/8.1

Software library: Microsoft .NET Framework 3.5 SP1

Connection: LAN terminal (10Base-T/100Base-TX wired LAN)

Operating Environment for Client Terminal

Windows: Internet Explorer 8/9/10/11

iOS: Safari on iPad using iOS 5 or higher

NOTE: Devices or browsers other than those shown above can be used as a client of this system. However, Panasonic does not guarantee proper operation with them.

* Please note that the items and content displayed in the Status Monitoring and Maintenance Scheduling Suggestion (Hour Meter) screens will vary depending on the device.

Please visit our site below for detailed information on the ET-SWA100, such as system requirements, software operating environment, operating environment for client terminals, and compatible Panasonic projectors and displays.

panasonic.net/avc/projector/products/swa100/

Free Trial License: 90 days, up to 2,048 units**

Please visit PASS to download and activate ET-SWA100 Early Warning Software. A free, 90-day trial version for monitoring up to 2,048 projectors or displays is available.

panasonic.net/avc/projector/pass/



** Software version 2.1 or later. The latest version is available on the PASS.



Software Licenses**

	1 year	3 years	Number of connected units
ET-SWA100A	ET-SWA100A3		up to 2,048 units
ET-SWA100B	ET-SWA100B3		up to 512 units
ET-SWA100C	ET-SWA100C3		up to 256 units
ET-SWA100D	ET-SWA100D3		up to 128 units
ET-SWA100E	ET-SWA100E3		up to 64 units
ET-SWA100F	ET-SWA100F3		up to 32 units

Panasonic®

Specifications and appearance are subject to change without notice. Product availability differs depending on region and country. This product may be subject to export control regulations. For more detailed information, please consult the dealer from whom you are purchasing the product. Microsoft, Windows, and Internet Explorer are either registered trademarks or trademarks of Microsoft Corporation in the United States and/or other countries. iPad and Safari are trademarks of Apple Inc., registered in the U.S. and other countries. All other trademarks are the property of their respective trademark owners. © 2014 Panasonic Corporation. All rights reserved.



For more information about Panasonic projectors, please visit:
 Projector Global Web Site – panasonic.net/avc/projector
 Facebook – www.facebook.com/panasonicprojector
 YouTube – www.youtube.com/user/PanasonicProjector

All information included here is valid as of April 2014.

ET-SWA100G1 Printed in Japan.